

# BRIDGEWATER HALL TREASURE TRAIL



Welcome to The Bridgewater Hall!  
Whilst you're here, why not follow Rolli's  
treasure trail, and find out some of  
the secrets of the building?



## Attention Adults!

This trail is designed for children  
ages 7-11, and can take up to  
30 minutes.

Please leave yourselves time to be  
seated if you're attending a concert.

Start by heading outside the main entrance.

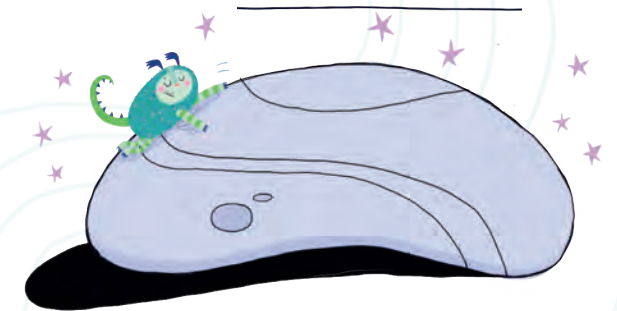
Can you see a massive pebble?

① It was brought here from Italy by  
Japanese sculptor Kan Yasuda in 1996.

The artist called it a Touchstone.

Apparently rubbing it is said to give you  
good luck – go ahead, touch it!

Can you find a plaque telling you the  
Japanese name of the Touchstone?



③ What was Barbirolli famous  
for?

Now look for a big head.  
Sir John Barbirolli rebuilt the Hall's  
orchestra after World War II,  
when only 39 players returned  
from fighting.

What year was Barbirolli  
born?

②

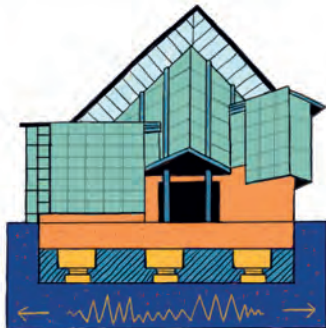


④ Finish the quote:  
'Or walk with kings  
...'



Did you know that none of  
The Bridgewater Hall  
touches the ground?

The whole building is suspended on  
springs on 250 columns underground,  
you can see them on a tour of the  
building. The springs make the building  
earthquake proof and stop any noise  
from outside!

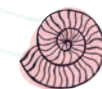
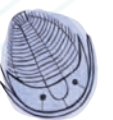


Now go into the Hall and look down.  
The Stalls Foyer floor is made of  
Jurassic limestone –  
it's almost 200 million years old.

⑤

Limestone is made when tiny grains  
of sand are pressed together by the weight of  
earth and water. Sometimes, the skeletons of  
animals get caught, and create a fossil.

There are lots of fossils in the floor,  
can you find one? What shape is it?  
Draw it in the box



If your fossil looks like a beetle, it's a trilobite.  
If it's shaped like a spiral, it's called an ammonite.  
They were both small sea creatures that lived the  
same time as the dinosaurs.

6

Can you see two huge doors leading into the auditorium?  
The doors are made of bronze, which changes colours over time.  
Can you see any fingerprints on the metal?

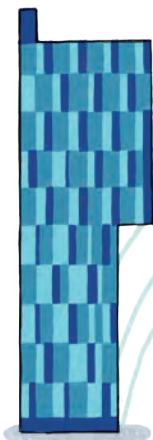
We never polish the doors because the colours change differently where they have been touched. Over time, the doors will change to reflect all the people who have ever visited the Hall.



9

The Beetham Tower? ☐

This skyscraper is 47 storeys high!



7

Make your way up to Circle Foyer

Look outside the big glass windows.  
Can you see.....



8

The Rochdale Canal? ☐

This stretch of the canal was created specially when the Hall was built in 1996.  
Are any geese taking a dip?



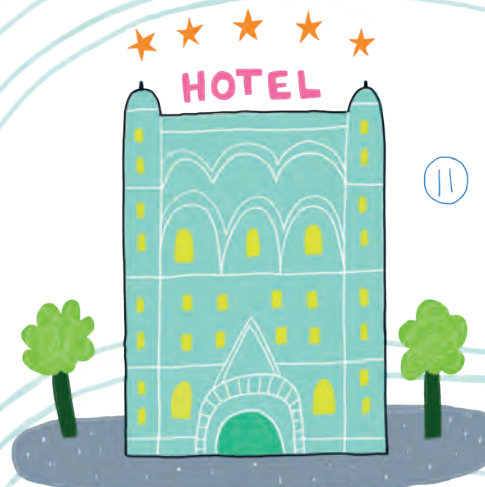
10

A tram? ☐

Where is it going?



11



A hotel? ☐

What's it called?

\_\_\_\_\_

Turn around

Up above your head there's a wiggly sculpture on the wall. It was created by Derryck Healey, but he didn't give it a name.

12

What does the sculpture remind you of?  
What name would you give it?

\_\_\_\_\_



Well done!

You've helped Rolli find  
The Bridgewater Hall's treasures!



## Treasure Trail Answers

1. Ishinki
2. 1899
3. Barbirolli was the Conductor of the Hallé orchestra, he conducted the orchestra for 25 years!
4. 'Nor lose the common touch'. This is a line taken from Rudyard Kipling's poem, 'If'. It suggests that even though Barbirolli was so successful, he wasn't too proud to get on well with people around him.

## Rolli's Records

Rolli's been busy creating a playlist of all their favourite tracks just for you! From playful symphonies to crazy concertos, let Rolli's Records take you on a magical musical adventure.

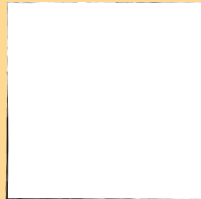
Ask an adult to scan the QR code to get listening.



Tip: Use the Orchestra Map on pages 3 and 4 to help you!

Listen to the following pieces of music.  
Use the boxes to draw what you hear!

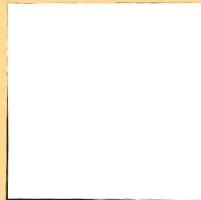
*The Lark Ascending*  
by Vaughn Williams



Can you hear?

Violins

*Pictures at an Exhibition*  
by Modest Mussorgsky

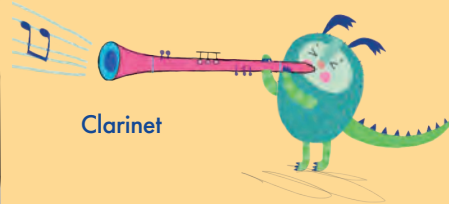


Trumpets

*Rhapsody in Blue*  
by George Gershwin



Clarinet



## CREATE YOUR OWN INSTRUMENT

From pig pianos to guitars made of ice, for thousands of years humans have been experimenting and finding new ways to make new sounds and music.  
Why not draw your own instrument?

My instrument is called a \_\_\_\_\_

It sounds like \_\_\_\_\_