

The Bridgewater Hall – Visual Story



01 Arriving at The Hall

Entry to the Hall is through four large front doors, made of glass. There's a short walk from the bus stop and taxi drop off across a large, paved piazza.

The Bridgewater Hall – Visual Story



02 Front Doors

When you get to the front doors, a member of our team will check your bags and direct you into the Hall foyer, on the Stalls level. They will be wearing black, with a lanyard.



The Bridgewater Hall – Visual Story



03 Access Lift

Step-free access from the NCP car park to the Hall is via the Access lift, which is next to the Canal Basin / Society bar. It is a large metal lift, with two levels.

The Bridgewater Hall – Visual Story

04 Stalls Foyer

When you go through the entrance doors, you will enter the Stalls Foyer – it's a large open space, with marble floors and white walls. It may be busy with customers. There may also be music performances happening in this area too.

There is seating available on all levels – there are blue chairs and large round metal tables which you can sit at to wait.



The Bridgewater Hall – Visual Story



05 Information Desk

If you need any information about your visit, you can speak to a member of our team at the Information Desk – it's straight in front of you as you enter the building. It will be staffed by one of our stewards, wearing a lanyard.

The Bridgewater Hall – Visual Story



06 Cloak Room

There's a cloak room for bags and coats available on Stalls level, next to the Box Office. It costs £2 per item – you will be given a ticket by a member of our staff when you hand in your items. Hand the ticket back to them when you want to get your items back.

The Bridgewater Hall – Visual Story



07 Stalls Lift

There are lifts to all floors available – these are on the right-hand side of the building as you enter.

They go to four floors;

- 1 – Stalls Level
- 2 – Choir Circle Level
- 3 – Circle Level
- 4 – Gallery level

They may be quite busy before a concert.

The Bridgewater Hall – Visual Story

08 Box Office

Box Office staff sit at these counters, behind a glass screen. They can help you with any questions you have about your tickets, and can help you book tickets for future events.



The Bridgewater Hall – Visual Story



09 Stalls Level Toilets

On Stalls level, the toilets are to the left as you enter, next to the Stalls Bar. There are toilets available on all floors in the building, marked Male, Female and Disabled.

The Bridgewater Hall – Visual Story

10 Café / Bars

Café and bar facilities are available on various levels, depending on the performance. You can order drinks and snacks here. Our bar staff wear blue or black shirts and lanyards.

The bars may be busy, particularly before a concert, and you may have to queue and wait to be served. Our bars accept both cash and card payments.



The Bridgewater Hall – Visual Story



11 Entering The Auditorium

You might have a printed paper ticket, or an eTicket on your smartphone. Your ticket will tell you which level and which door to enter the auditorium through.

When you are ready to enter the auditorium, please show your ticket to the steward on the door, and they can direct you to your seat. Our stewards will be wearing a lanyard.

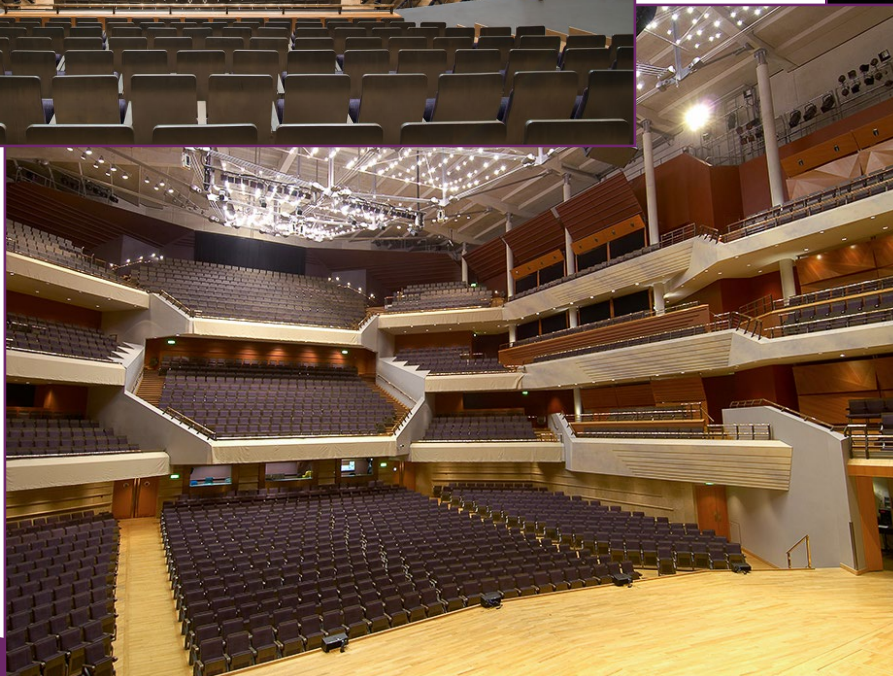
The Bridgewater Hall – Visual Story



12 Auditorium

The stage is large and wooden – it may have musicians already sat on it, or chairs ready for them. If the performance you are attending has a choir, they may be sitting in the choir seats, directly behind the stage. There may be a screen above the stage to show images and videos.

The seats are grey, and swing down for you to sit down. They swing back up when you stand up. There is flat access to the majority of seats on all levels.



The Bridgewater Hall – Visual Story

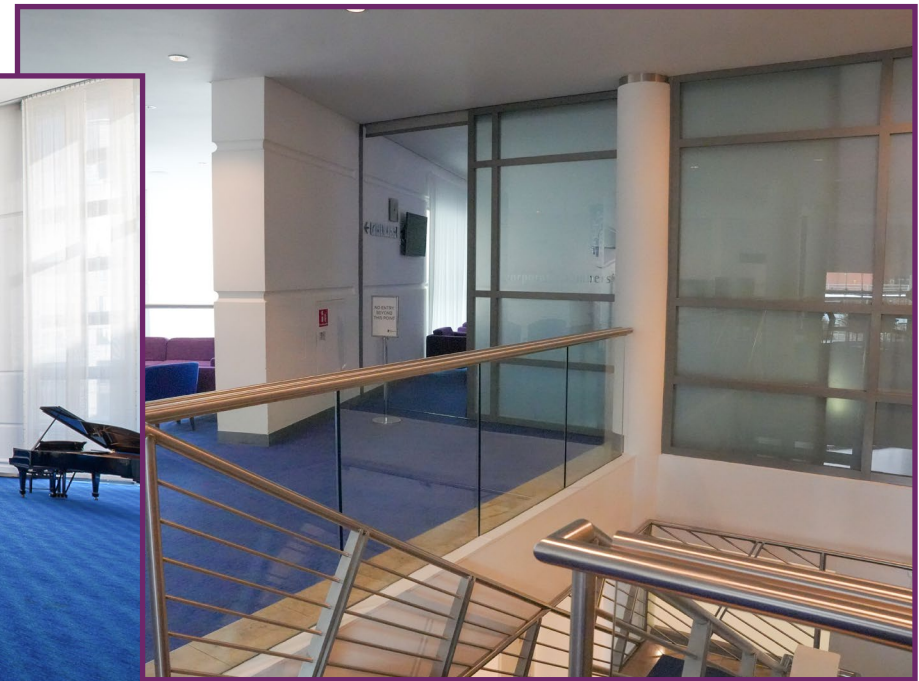


13 Barbirolli Room

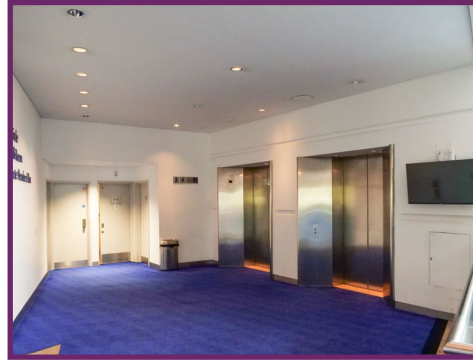
Some performances may take place in the Barbirolli Room. It is on the Choir Circle level, on the left hand side of the building.

This is a large room with a high ceiling – it may have blue seats in rows, or blue seats around large tables.

You may have to show a concert ticket to a steward to enter, or you might be able to go into the performance or workshop without a ticket.



The Bridgewater Hall – Visual Story



14 Foyers

The foyers on all levels are large open spaces, with tables and chairs, bar facilities, lifts and toilets. There are four levels, each with a foyer.

- 1 – Stalls Level
- 2 – Choir Circle Level
- 3 – Circle Level
- 4 – Gallery level

